

Middle Deschutes Pesticides Stewardship Partnership Strategic Plan

Meeting 3: Defining Reporting and Technical Assistance

Agenda

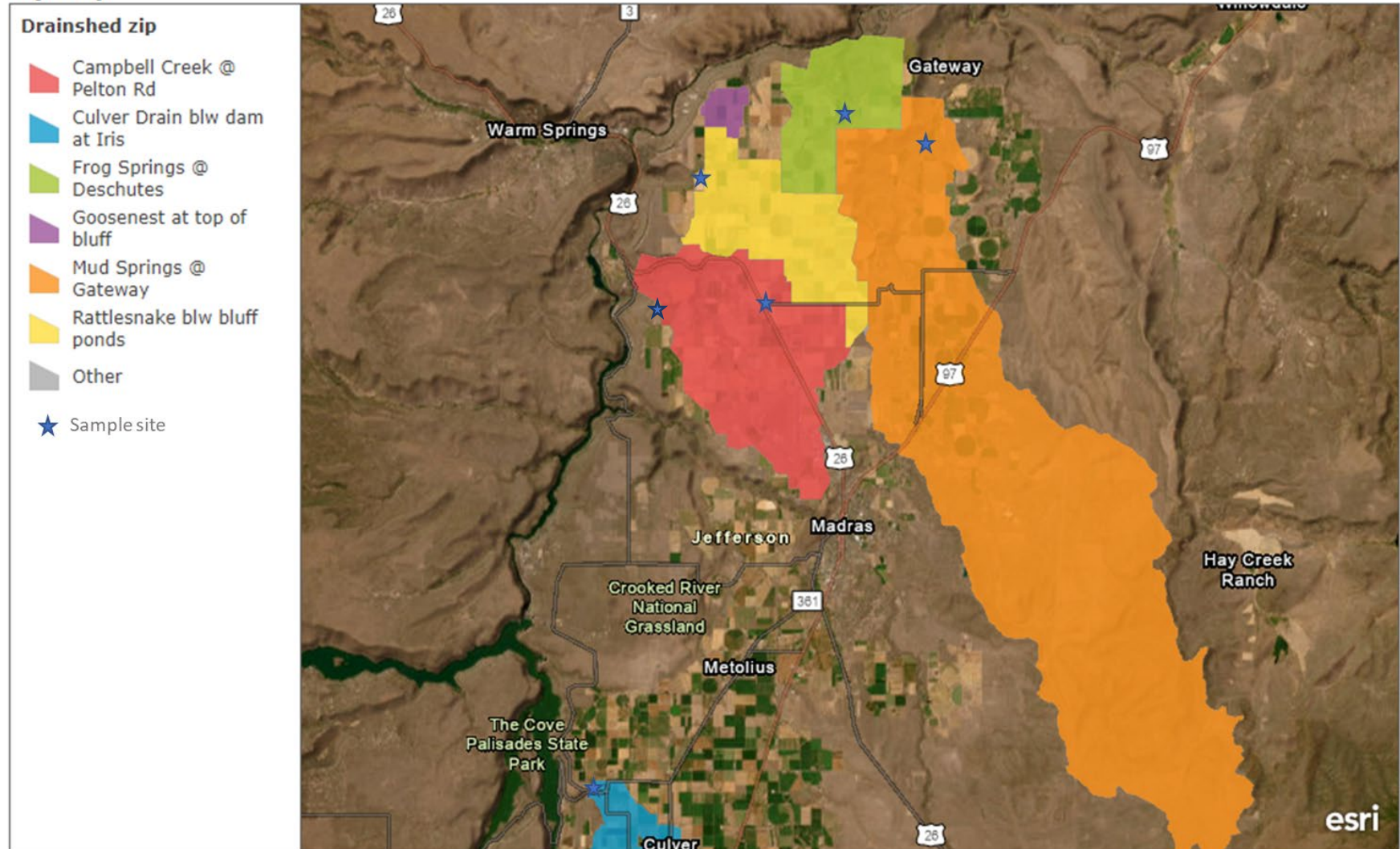
- (Meeting 2 review) Discuss additional sample sites at Frog Springs and Rattlesnake Canyon
- Confirm PSP Boundary
- Establish methods to document improvements
- Establish technical assistance
- Discuss Integrative Pest Management
- Review financial needs

Meeting Minutes

1. Adding sampling sites at Frog Springs and Rattlesnake Canyon
 - a. Where should these sample sites be?
 - i. Decided it would be just below the ponds on Rattlesnake Canyon, and at Juniper rd. for Frog Springs
 - ii. Switch off Mud Springs and Frog Springs every other year so that we have a full year of data for each (rather than parts of a year)
 1. Start with Mud Springs, then switch to Frog Springs in 2024
2. Confirm PSP Boundary
 - a. Proposed to remove Warm Springs from project area since it is outside the current list of sampled drainages,
 - b. Add part of Crooked River Watershed up to Deschutes River/Crooked River boundaries southwest of NUID region (to include Culver Drain which is already being monitored)
 - c. Chose to align with ODA Ag Water Quality Boundary which matches this criteria
3. Establish methods to document improvements
 - a. Ideas: post to website, provide an annual report at Farm Fair, post in the local newspaper, provide technical reports or case studies
 - i. Annual report at the farm fair during SWCD presentation
 - ii. Videos and articles with consent of the board
 - iii. A single pager (send that to the chemical companies) annual reports- broken down by season
 - iv. Social media
4. Establish technical assistance
 - a. Do we need more resources locally to develop integrative pest management strategies?
 - i. Developing an IPM is too broad, instead focus on integrative weed management and known uses/users
 1. Ie. Add irrigation district to the list of target pesticide users
 2. Look at the types of alternative herbicides to replace Diuron

- ii. Kaci at OSU invite into the conversations to develop alternatives
 - 1. OSU has a whole center on Water Quality and Pesticide usage
 - iii. Lean on the technical assistance to develop material to share
- 5. Review financial needs
 - a. Will this be a full-time job for one person? How about 40-50% of a full-time staff per year?
 - i. Current PSP budget (2021-2023 for Strategic Plan development and ongoing monitoring and outreach) funds 20-33% of one full-time staff per year.
 - ii. Budget discussion was paused until the following meeting.

My Map



Oregon State Parks, State of Oregon GEO, Esri, HERE, Garmin, SafeGraph, GeoTechnologies, Inc, METI/NASA, USGS, Bureau of Land Management, EPA, NPS, USDA | Earthstar Geographics