


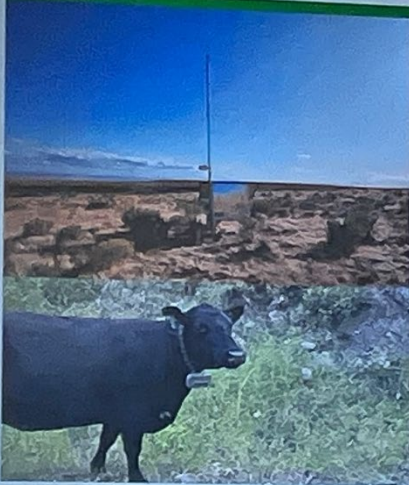
Jay Kehne's Presentation at Drought Q Mtg, May 8, 2024 – Selected slides
 Jay followed Dave Bohnert's presentation (Studies conducted at EOARC)

Virtual Fence

Example: Sitting at home, a rancher can put 25 miles of virtual fence on the ground in less than 5 minutes costing \$27,500 that will control 300 cow calf pairs on 34,000 acres. To construct the same 25 miles of barb wire fence would cost \$500,000. The rancher could remove, add to, or change locations of all those fences the next day or week as needed.

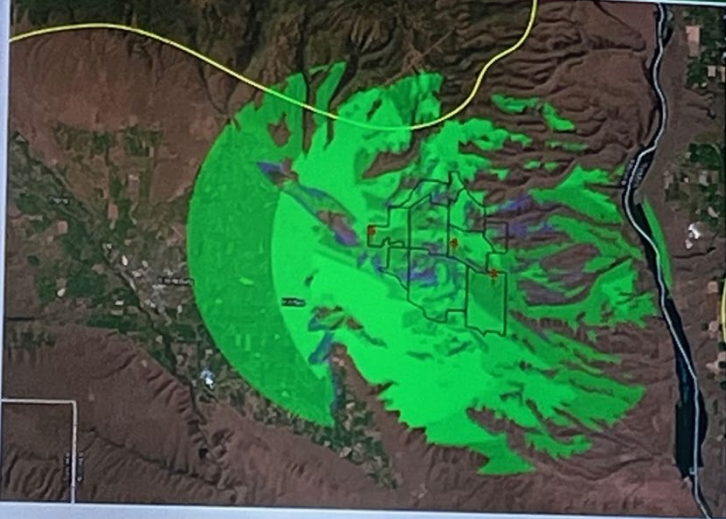


Current WA Projects



- EKCD - Klickitat County**
 - 2 Base Stations
 - 350 Cows Collared
 - 3 year cost of \$77,500
- USFS - Okanogan County**
 - 3 Base Stations
 - 250 Cows Collared
 - First Tower to be Delivered by Helicopter

Wild Horse Solar & Wind Facility CRM

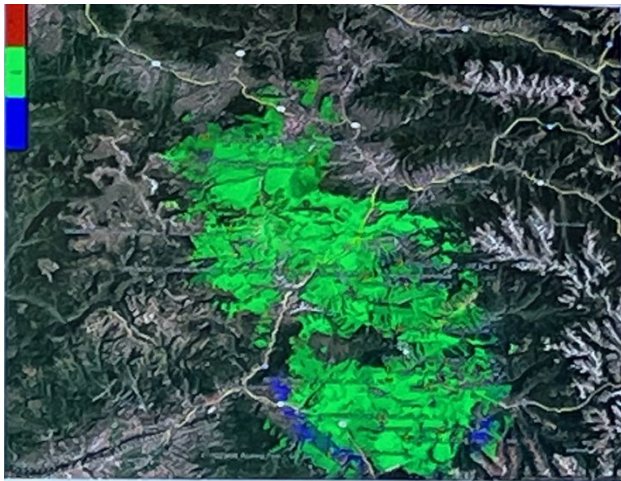
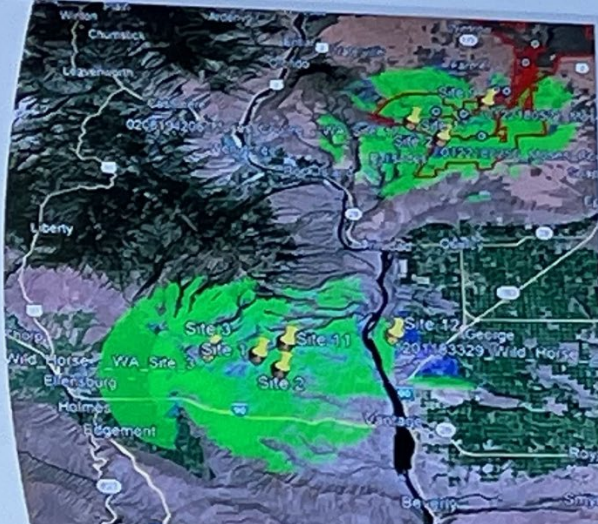


- 2-5 Base Stations Planned Spring 2024
- 300 Cows To Be Collared
- Cost of Base Stations \$37,500
- Cost of Collar Leases 300 cows \$15,000/year
- Multiple Funding Sources, CNW, WDFW, WSRRI, PSE with virtual fence capability on 40,000 Project Acres + additional coverage on 280,000 acres

Click to add notes

Expansive Coverage For the Investment

- Wild Horse Wind Farm Virtual Coverage: 300 square miles 192,000 acres 5 Base Stations \$62,500
- Moses Coulee Virtual Coverage: 200 Square Miles 128,000 acres 3 Base Stations \$ 37,500
- Total Coverage with 8 Base stations 500 Square Miles 320,000 acres \$100,000
- Thousands of miles of virtual fence possible.
- Same \$100,000 would buy 4 miles of barbed wire fence to fence 640 acres



What does the future of Virtual Fence look like?

Colorado Collaborative Grid Project

- 15 Base Stations located on USFS, BLM, & Private Lands
- Over 400,000 Acres
- 10 Ranchers Involved
- 4,000 Cattle Collared

Carbon Sequestration: Data Backed Carbon Credit Program

- Using Virtual Fence to conduct more intensive rotational grazing plans allows access to carbon credits on 10-year renewable contracts. Program pays for Vence collar subscription, ranch advisory, soil sampling, and paperwork. \$10-\$20/acre





Contact Information for VENCE Representatives

Nathaniel Slinkert
Director of Business Development
360-954-4677
Nathaniel.slinkert@merck.com

Ben Veres
Carbon Credit Program
ben@katericarbon.com

CK Freedenburg
Herd Management Software Coordinator
559-737-3228
cerissa.freedenburg@merck.com

Questions?

Jay Kehne
Associate Director, Conservation Northwest
jkehne@conservationnw.org
509-470-1767

Jordan Ryckman
Conservation Coordinator, Segetands
jordan@conservationnw.org
509-823-4110

